

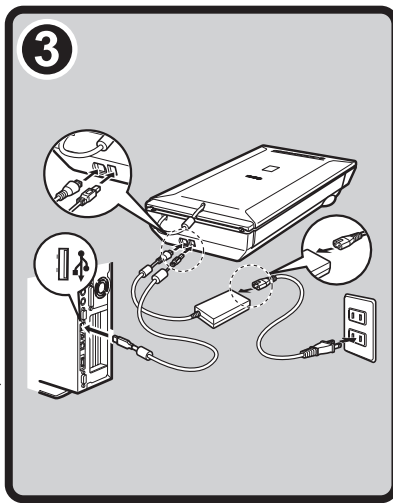
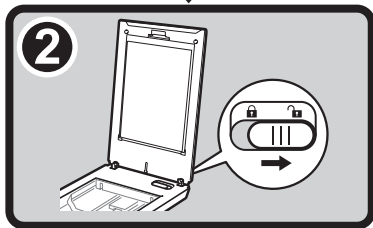
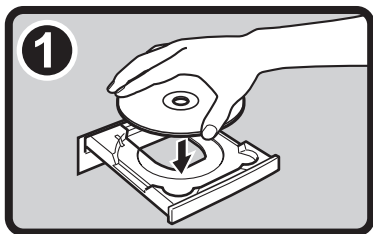
CanoScan 8800F

Quick Start Guide

Please read this guide before operating this scanner. After you finish reading this guide, store it in a safe place for future reference.

Table of Contents

Package Contents.....	1	Scanning with MP Navigator EX.....	7
Installing the Software.....	2	Scanning Film	8
Preparing the Scanner	4	Specifications.....	11
Try Scanning.....	5	Safety Precautions.....	12
Using the Scanner Buttons	6		



FCC Notice (U.S.A. Only)

For 120V, 60Hz model

Model Number : K10301

This device complies with Part 15 of the FCC Rules. Operation is subject to the following two conditions: (1)

This device may not cause harmful interference, and (2) this device must accept any interference received, including interference that may cause undesired operation.

Note: This equipment has been tested and found to comply with the limits for a Class B digital device, pursuant to Part 15 of the FCC Rules. These limits are designed to provide reasonable protection against harmful interference in a residential installation. This equipment generates, uses and can radiate radio frequency energy and, if not installed and used in accordance with the instructions, may cause harmful interference to radio communications.

However, there is no guarantee that interference will not occur in a particular installation. If this equipment does cause harmful interference to radio or television reception, which can be determined by turning the equipment off and on, the user is encouraged to try to correct the interference by one or more of the following measures:

- Reorient or relocate the receiving antenna.
- Increase the separation between the equipment and receiver.
- Connect the equipment into an outlet on a circuit different from that to which the receiver is connected.
- Consult the dealer or an experienced radio/TV technician for help.

Use of a shielded cable is required to comply with Class B limits in Subpart B of Part 15 of the FCC Rules.

Do not make any changes or modifications to the equipment unless otherwise specified in the manual. If such changes or modifications should be made, you could be required to stop operation of the equipment.

Canon U.S.A., Inc.
One Canon Plaza
Lake Success, NY 11042
1-516-328-5600

Warning

When you use this product, you should pay attention to the following legal issues:

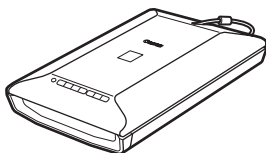
- Scanning of certain documents, such as bank notes (bank bills), government bonds and public certificates, may be prohibited by law and may result in criminal and/or civil liability.
- You may be required under law to obtain authorization from a person possessing copyrights or other legal rights to the item being scanned.

If you are uncertain of the legality of scanning any particular item, you should consult your legal adviser in advance.

- Microsoft is a registered trademark of Microsoft Corporation.
- Windows is a trademark of Microsoft Corporation, registered in the U.S. and other countries.
- Windows Vista is a trademark of Microsoft Corporation.
- Macintosh and Mac are trademarks of Apple Inc., registered in the U.S. and other countries.
- Adobe and Photoshop Elements are either registered trademarks or trademarks of Adobe Systems Incorporated in the United States and or other countries.
- ©ArcSoft, Inc. All rights reserved for PhotoStudio.
- Other names and products not mentioned above may be registered trademarks or trademarks of their respective companies.

Package Contents

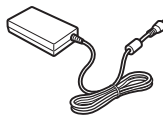
Scanner and Accessories



Scanner



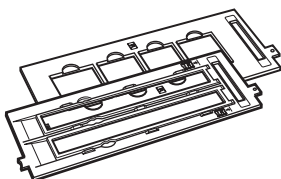
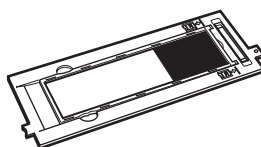
USB Cable



AC Adapter



Power Cord

Film Guides
(for 35mm film strip/slide)Film Guide
(for 120 format film)

Documentation

- Quick Start Guide (this document)
- Additional Documents

Setup CD-ROM

- Software Programs
 - ScanGear (scanner driver)
 - MP Navigator EX
 - ArcSoft PhotoStudio
 - Presto! PageManager (Windows only)
 - OmniPage SE
- On-screen Manuals
 - Scanning Guide (for ScanGear, MP Navigator EX, and troubleshooting)
 - Manuals for bundled application programs

Adobe® Photoshop® Elements CD-ROM

Refer to the instruction sheet for installing.

*In this guide, Windows Vista™ operating system screenshots are used to illustrate explanations common to all operating systems.

Installing the Software



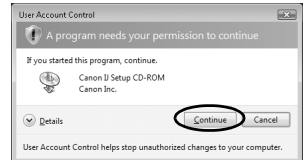
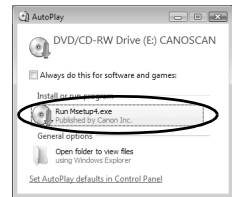
- Do NOT connect the scanner to a computer before installing the software. If you connect the scanner and the Found New Hardware Wizard appears, unplug the USB cable from the computer, and then click [Cancel] to close the screen.
- Quit all running applications before installation, including anti-virus software.
- To upgrade from Windows® XP to Windows Vista, first uninstall software bundled with the Canon scanner.
- Log in as an administrator to install the software.

1 Place the Setup CD-ROM in the drive.

For Macintosh®: Double-click the [Setup] icon. Enter the administrator ID and password on the authentication dialog box.

2 For Windows Vista, when the [AutoPlay] dialog box appears, run the setup program, and then click [Continue] to proceed when the [User Account Control] dialog box appears.

For Windows 2000/XP and Macintosh, skip this step and go to step 3.



3 Click [Easy Install] on the main menu.



- 4** Click [Install] to start installation.
Carefully read the License Agreement, and then click [Yes] to proceed.



- 5** Follow the on-screen instructions to perform the installation.

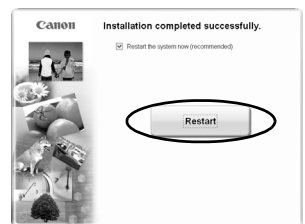


- 6** When the Registration dialog box appears, follow the on-screen instructions to ensure product support.



- 7** When the installation is complete, click [Restart] to restart your computer.

After restarting the computer, "Solution Menu" will appear. See the last part of the "Try Scanning" description on page 5. Do not click a menu on the Solution Menu screen at this time.

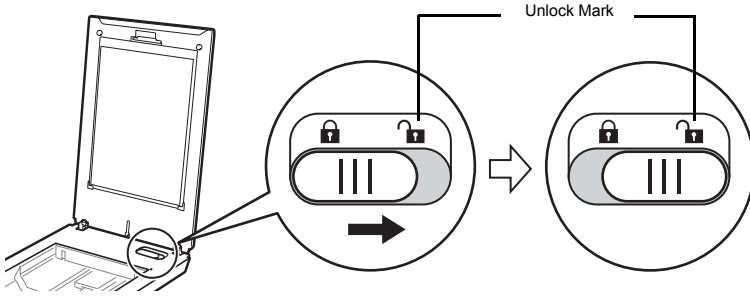


- Make sure to remove the CD-ROM from the drive and store it in a safe place.
- If you encounter a problem during installation, see "Troubleshooting" in the *Scanning Guide*.

Preparing the Scanner

Unlocking the Scanner

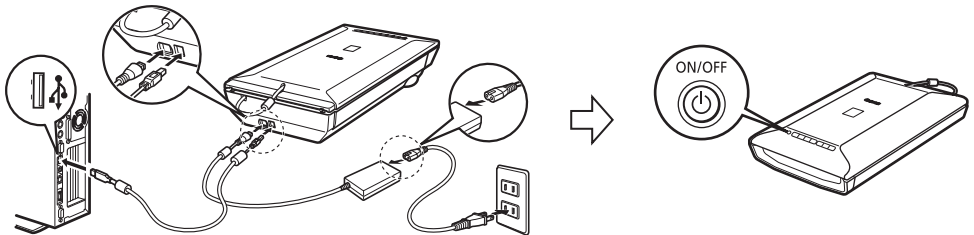
- 1 Peel the shipping tapes off the scanner.
- 2 Open the document cover and slide the lock switch toward the unlock mark (🔓).



- Handle the scanner with both hands. Be careful not to drop the scanner.
- When you carry or transport the scanner, make sure to slide the lock switch toward the lock mark (🔒) to fasten the scanning unit.

Connecting the Scanner


- 1 Connect the scanner to your computer with the supplied USB cable.
- 2 Connect the supplied power cord to the AC adapter.
- 3 Connect the AC adapter to the scanner.
- 4 Plug the power cord into the electrical outlet.
- 5 Press (🔌) to turn the power on.

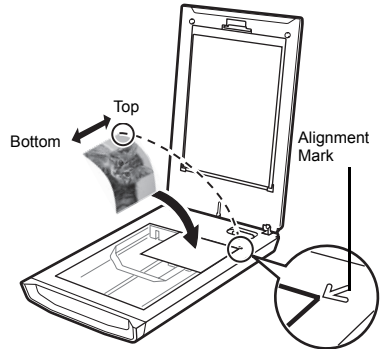



- Only use the USB cable, AC adapter, and the power cord provided with the scanner. Use of other cables or adapters may lead to a malfunction.
- Always attach the AC adapter to the scanner before plugging in the power cord to the electrical outlet. Reversing this order may lead to malfunctions.
- When the scanner is connected to the USB 1.1 port and "HI-SPEED USB Device Plugged into non-HI-SPEED USB Hub" message appears, ignore the message. The scanner operates in this condition without problems.

Try Scanning

This section explains the basic scanning procedures using the image editing program, ArcSoft PhotoStudio, and the scanner driver, ScanGear.

- 1 Place a document on the document glass and close the document cover.
- 2 Start ArcSoft PhotoStudio.
For Windows: Select [Start] - [(All) Programs] - [ArcSoft PhotoStudio 5.5], then click [PhotoStudio 5.5].
For Macintosh: Open [Applications] - [PhotoStudio] folders, then double-click the [PhotoStudio] icon.
- 3 From the [File] menu, click [Select Source] and select the scanner model.
For Windows: Do not select the one that includes [WIA] in the model name.
- 4 Click the acquire icon  to start ScanGear.
- 5 Select the type of document you are scanning in [Select Source] and click [Preview].
- 6 Set [Destination] and/or [Output Size] as needed.
- 7 Click [Scan] to start scanning.

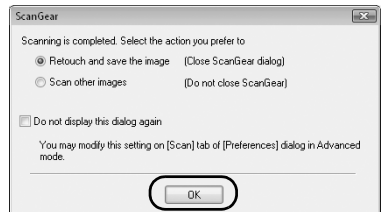
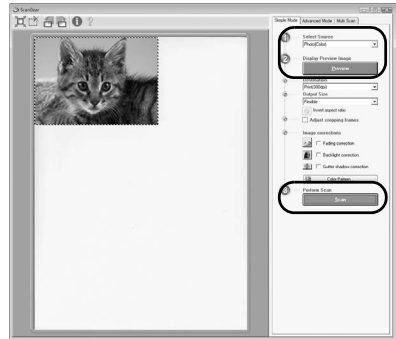



-  Do not touch the scanner while it is operating.
- Do not see the light source directly during a scan job.

- 8 When prompted to close ScanGear, click [OK].
- 9 Save the scanned image in ArcSoft PhotoStudio and close the window.

<Solution Menu>

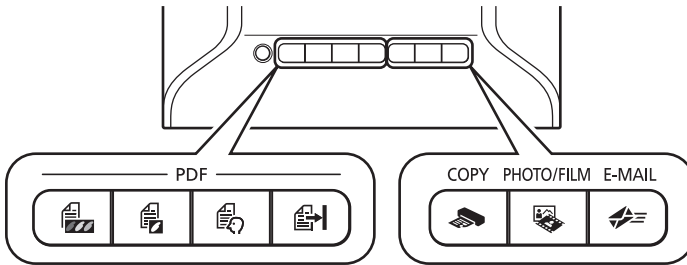
You can select MP Navigator EX, the *Scanning Guide* (on-screen manual), or the Online Registration.



• For more information on scanning using ScanGear, bundled applications, and troubleshooting, see the on-screen manual *Scanning Guide*. To open the *Scanning Guide*, double-click the Scanning Guide icon on the desktop, or click on  in ScanGear or MP Navigator EX.

Using the Scanner Buttons

Scanner buttons allow you to copy, scan, e-mail, and save scanned images in PDF format with a press of a button. Simply place your document on the scanner, and then press the scanner button for the required function. For more information, see the *Scanning Guide*.



PDF Buttons

PDF buttons allow you to easily create PDF files according to your needs. Note that these buttons are not labeled on the scanner.



COLOR Button

Scans color images in A4 or Letter size* at 300 dpi by default.



BLACK & WHITE Button

Scans black & white images in A4 or Letter size* at 300 dpi by default.



CUSTOM Button

Scans images in user-specified settings.



FINISH Button

Ends the operation and saves the scanned image in a PDF file.

*The size may differ depending on your system environment.



COPY Button

Prints (copies) the scanned image with a printer.



PHOTO/FILM Button

Opens the scanned image in the bundled application program, ArcSoft PhotoStudio.



E-MAIL Button

Attaches the scanned image to a new e-mail message.

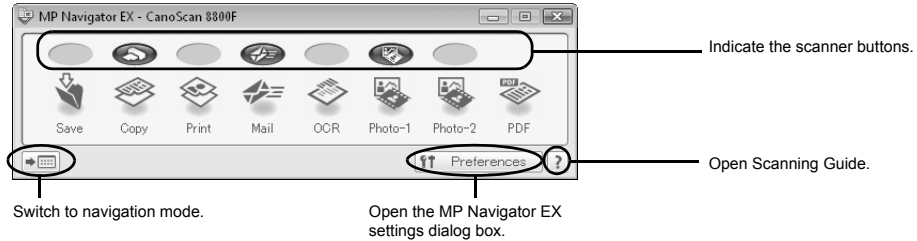
The first time you press this button, you will be prompted to select the e-mail program to use with this function.

- Before using scanner buttons, make sure that all the software programs are installed on your computer using the [Easy Install] option of the Setup program. See "Installing the Software" on page 2. If the scanner buttons do not work properly, see "Troubleshooting" in the *Scanning Guide*.
- **For Mac OS X v.10.3.x and v.10.2.x (v.10.2.8 or later):** Before using the scanner buttons, you need to set Image Capture (in [Applications] folder) to open MP Navigator EX automatically when a scanner button is pressed. Start Image Capture, and then perform the following.
 - Mac OS X v.10.3.x: Click [Options] and select MP Navigator EX1 in [When a scanner button is pressed, open:].
 - Mac OS X v.10.2.x (v.10.2.8 or later): Select [Other] in [When a scanner button is pressed, open:]. Select MP Navigator EX1.0 and click [Open]. Click [OK] and quit Image Capture.

Scanning with MP Navigator EX

MP Navigator EX allows you to copy, scan, e-mail, convert scanned images with OCR programs, create PDF files with them, or import them into other application programs merely by clicking the buttons in the MP Navigator EX. It also allows you to set various settings for each function.

One-click Mode



Operating Procedures

1 Start MP Navigator EX.

For Windows: Select [Start] – [(All) Programs] – [Canon Utilities] – [MP Navigator EX 1.0], and click [MP Navigator EX 1.0].

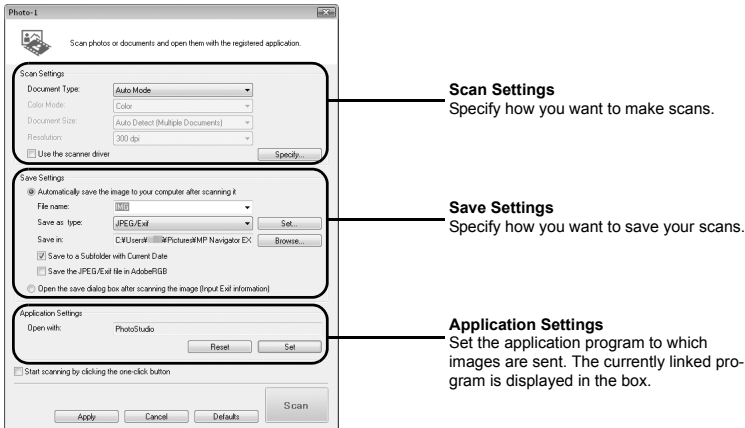
For Macintosh: Open [Applications] – [Canon Utilities] folders, then double-click the [MP Navigator EX 1.0] icon.

The One-click mode window of MP Navigator EX is displayed.

2 Click the button for the required function.

A window will appear for each of the buttons. Change the settings as needed.

Example: [Photo-1] window



3 Click [Scan].

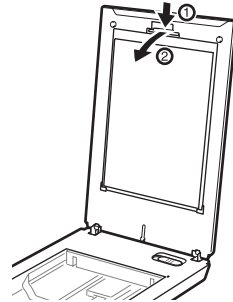
The scanner starts scanning and carries out the function of the selected button.

• For more information on MP Navigator EX, see the on-screen manual *Scanning Guide*.

Scanning Film

This scanner can scan 35 mm film (film strip or slide) and 120 format film. Follow the procedure below when scanning film.

- 1** Remove the protective sheet from the document cover.
Press and hold the lever at the top of the protective sheet while you ① pull the sheet outward and ② detach it.



- Store the protective sheet in a safe place so that it will not get bent or broken.
- Always put the protective sheet back when you are not scanning film to protect the light source in the document cover.

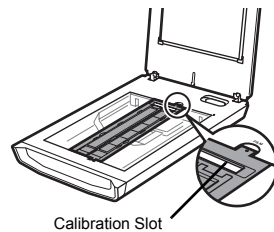
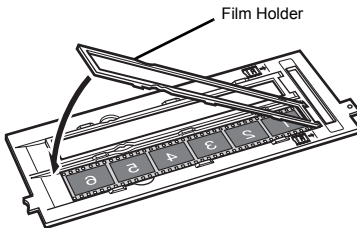
- 2** Insert the film into the Film Guide.



- Use a blower brush to remove any dust from the film, which will affect the image quality, and take care to hold the film by its edges to avoid transferring dirt or fingerprints to it.
- Do not block the calibration slot on the Film Guide when scanning film. Colors will not be scanned correctly if the calibration slot is obstructed.
- Close the Film Guide securely. Press lightly until it clicks into place.

35mm Film Strip

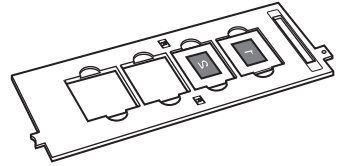
- ① Open the film holder on the film guide, place the film face down and close the film holder.
- ② Align the Film Guide's tab with the FILM symbol on the document glass of the scanner.



- Ensure that there is no gap between the edge of the film and the film guide on the side near the calibration slot.

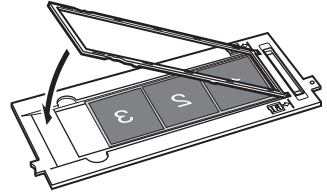
35mm Slides

- ① Align the Film Guide's tab with the FILM symbol on the document glass of the scanner.
- ② Place a slide or slides face down (correctly viewed from below) in the Film Guide as shown in the diagram to the right.



120 Format Films

- ① Open the film holder on the film guide, place the film face down and close the film holder.
- ② Align the Film Guide's tab with the FILM symbol on the document glass of the scanner.



- Leave a gap of 5 mm or greater between film strips when placing two or more on the document glass.
- Ensure that there is no gap between the edge of the film and the film guide on the side near the calibration slot.

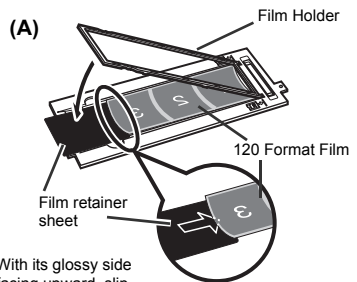
Using a Film Retainer Sheet

Curled film strips can stick to the document glass and cause a pattern of rings called Newton Rings to appear on the scanned image. If this occurs, scan using the supplied film retainer sheet as shown in the diagram.

- (A) Scan with the film retainer sheet inserted beneath the film.
- (B) If Newton Rings still appear after following Instruction (A), turn the film strip over and place it in the film holder with the film retainer sheet on top so that the film edges are held down for scanning. Then preview the image in ScanGear and click the [Mirror] button to reverse the image before initiating the final scan.



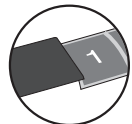
To avoid damaging the film, always place the glossy side (the side without an illustration) of the film retainer sheet against the film.



With its glossy side facing upward, slip the film retainer sheet under the film.

(B)

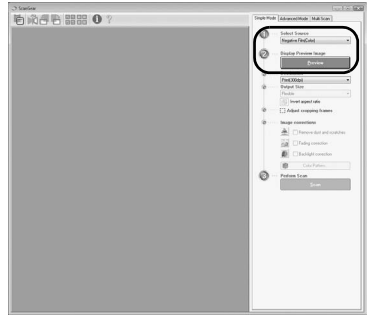
Hold the film edges down by placing the film retainer sheet on top with its glossy side facing downward.



- 3 Close the document cover.

Scanning Film

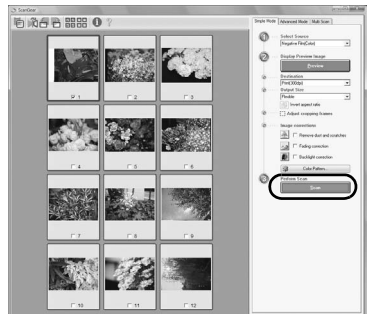
- 4 Start ArcSoft PhotoStudio, then start ScanGear. Follow the steps 2 to 4 in "Try Scanning" on page 5.
- 5 Select [Negative Film (Color)] or [Positive Film (Color)] in [Select Source] to match the type of film you are scanning, then click [Preview].



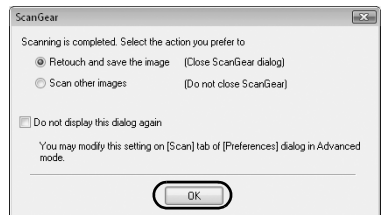
- 6 Place a check mark beside the number(s) of the frame(s) you want to scan. Perform image corrections as needed.
- 7 Click [Scan] to start scanning.



Do not touch the scanner while it is operating.



- 8 When prompted to close ScanGear, click [OK].
- 9 Save the scanned image in ArcSoft PhotoStudio and close the window.



- Do not leave the film strip in the film guide for an extended period of time as heat from the unit may damage the film.
- For more information on scanning film, see "Scanning Film" in the *Scanning Guide*.

Specifications

		CanoScan 8800F
Scanner Type		Flatbed
Sensor Type		CCD 6-line color
Light Source		White LED
Optical Resolution *1		4800 x 9600 dpi
Selectable Resolution		25-19200 dpi (ScanGear)
Scanning Bit Depth	Color	48 bit input (16bit input for each color (RGB)) 48 bit or 24 bit output (16bit or 8bit output for each color (RGB))
	Grayscale	48 bit input (16 bit for each color) 16 bit *2 or 8 bit output
Scanning Speed *3 (Photo or Document)	Color	12.1 msec./line (4800 dpi), 12.1 msec./line (2400 dpi), 6.1 msec./line (1200 dpi), 1.7 msec./line (600 dpi), 1.0 msec./line (300 dpi)
	Grayscale, B&W	
Scanning Speed *3 (Film)		1.5-36.3 msec./line
Interface		USB 2.0 Hi-Speed
Maximum Document Size		A4/Letter: 216 x 297 mm
Film Type/Number of Frames		35 mm strip (12 frames max)/35 mm slide (4 frames max) 120 format film: max. 6 x 22 cm (filmstrip only)
Scanner Buttons		7 buttons (PDF x 4, COPY, PHOTO/FILM, E-MAIL)
Operating Range	Temperature	10°C to 35°C (50°F to 95°F)
	Humidity	10% to 90% RH, 20% to 80% RH for film scanning without condensation formation
Power Requirements		AC 100-240V, 50/60 Hz *4
Power Consumption		In operation: 18 W maximum, Stand-by: 1.5 W, Switch-off: 1.0 W (Using supplied AC adapter)
Exterior Dimensions (W) x (D) x (H)		272 x 479 x 100 mm (10.7 x 18.9 x 4.0 in.)
Weight		Approximately 4.2 kg (9.2 lbs.)

*1 Optical Resolution represents the maximum sampling rate based on ISO 14473.

*2 For film scanning only.

*3 The fastest speed in USB 2.0 Hi-Speed mode on Windows PC. Transfer time is not included. Scanning speed varies according to the document types, scan settings, or specifications of the computer.

*4 Canon AC Adapter: K30286 Do not use it for other products.

- Specifications are subject to change without notice.

Model Number: K10301 (CanoScan 8800F)

Safety Precautions

Please read and take note of the following precautions before using the scanner and accessories.

WARNING

Indicates a warning concerning operations that may lead to death or injury to persons if not performed correctly. In order to use the scanner safely, always pay attention to these warnings.

CAUTION

Indicates a caution concerning operations that may lead to injury to persons or damage to property if not performed correctly. In order to use the scanner safely, always pay attention to these cautions.

About Locations

WARNING

- Do not place the scanner near flammable liquids such as alcohol or thinners. If the internal electrical parts come in contact with flammable liquids, fire or electrical shock may result.
- Do not place the following objects on the scanner; metallic objects such as necklaces, liquid containers such as cups, vases and flowerpots. If the internal electrical parts come in contact with these objects, fire or electrical shock may result.

If any of these objects or liquids enters the scanner, immediately unplug the AC adapter and the power cord. Then contact your retailer or Canon Customer Support Help Desk.

CAUTION

- Do not place the scanner in areas with high humidity, areas subject to direct sunlight, areas with high temperatures and areas near flame sources. Fire or electrical shock may result.
- Do not place the scanner on shaky stands, unstable surfaces or surfaces subject to frequent vibrations. If the scanner falls, it may cause injuries.
- Do not place heavy objects on the scanner. Objects may fall and cause injuries.

About the Power Supply

WARNING

- Do not damage, mutilate or modify the AC adapter and the power cord. Do not place heavy objects on, pull or excessively bend, twist or tie the cord of the AC adapter and the power cord. Damaged wires may cause fire or electrical shock.
- Do not plug in/unplug the AC adapter and the power cord with wet hands. Fire or electrical shock may result.
- Do not connect excessive numbers of plugs into one electrical outlet. Fire or electrical shock may result.
- Always plug the AC adapter and the power cord in all the way. If it is not plugged in completely, fire or electrical shock may result.
- Do not use AC adapters and power cords other than the one supplied. Fire or electrical shock may result.
- As a rule, do not use electrical extension cords. Fire or electrical shock may result. If the use of an extension cord is necessary, do not use one longer than 15 feet (5 m). Make sure that the extension cord is not twisted, and that the AC adapter and the power cord are fully plugged into the extension cord. Do not use multiple extension cords.
- Do not use extension cords in corridors or other high traffic areas where they can be stepped on or tripped over. This could damage the cords and result in fire or electrical shock.
- Do not use the AC adapter and the power cord outdoors or in exposed areas. Fire or electrical shock may result.

Safety Precautions

CAUTION

- Do not plug the AC adapter and the power cord into outlets with voltages other than the specified voltages. Incorrect voltages may result in fire or electrical shock.
- When unplugging the AC adapter and the power cord, always pull on the main body. Pulling on the cord may damage the wires and lead to fire or electrical shock.
- Do not place objects around the AC adapter and the power cord in case it needs to be unplugged during emergencies.
- Unplug the AC adapter and the power cord from the outlet at least once a year and clean the area around the base of the AC adapter's metal pins to ensure that all dust is removed. If dust accumulates in this area, it may result in fire.

General Handling Precautions

WARNING

- Do not take apart or modify the scanner. Fire or electrical shock may result from improper handling of its components.
- If you hear unusual noises, see smoke, feel excessive heat or smell anything unusual, immediately unplug the AC adapter and the power cord. Then contact your retailer or Canon Customer Support Help Desk. Continued use of the scanner may result in fires or electrical shock.
- Do not use flammable sprays near the scanner. Also do not spill water, liquids, or flammable liquids on the scanner. If these fluids enter and contact the inner electrical parts, fire or electrical shock may result.
- When cleaning the scanner, always unplug the AC adapter and the power cord. Damp a cloth with water and wring the cloth well. Do not use flammable liquids such as alcohol, benzene or thinners. If a flammable liquid enters the inner electrical parts, fire or electrical shock may result.

If anything enters the scanner, immediately unplug the AC adapter and the power cord. Then contact your retailer or Canon Customer Support Help Desk.

CAUTION

- Do not place items that weigh 4.4 lbs. (2.0 kg) or more on the document glass. Also, do not press heavily (i.e., more than 4.4 lbs. (2.0 kg)) on the document cover or the document glass. The document glass may break and cause personal injury.
- Do not bump the document glass or drop heavy books or objects on it. The document glass may break and injure you.
- When not in use for extended periods, unplug the AC adapter and the power cord for safety.
- When transporting the scanner, be extremely careful. Dropping it could cause injury.
- Wait until the scanner has cooled before placing a cover over it. Otherwise fire may result.
- Do not use the supplied CD-ROM in regular CD players. It produces excessively loud sound that may cause hearing damage.

Setup and Operating Conditions

- Do not set up in areas where there are excessive fluctuations in temperature. Also do not move the scanner from low-temperature areas to high-temperature areas. Condensation may cause image errors. Leave the scanner enough time to gradually adapt to the new conditions before use.
- Do not place the scanner in areas subject to direct sunlight or strong room light. It may cause damage to the scanner or decrease image quality. If you have to place it in direct sunlight, make sure to use a thick curtain to block the light.
- Leave enough space (approximately 8 in. (20 cm)) around the scanner when setting up.

The socket-outlet shall be installed near the equipment and shall be easily accessible.



As an ENERGY STAR[®] Partner, Canon Inc. has determined that this product meets the ENERGY STAR[®] guidelines for energy efficiency.